

## CONSTRUCTION COST INDEX 2000 - 2016

	2000	2001	2002	2003	2004	2005	2006	2007	2008	2009	2010	2011	2012	2013	2014	2015	2016
<b>Jan</b>	185.0	211.0	232.5	237.9	246.2	260.0	269.1	284.4	297.0	300.2	298.9	304.1	299.7	302.19	303.35	304.97	308.21
<b>Feb</b>	185.5	211.8	232.6	238.0	247.8	260.1	269.8	284.4	298.2	298.5	299.4	295.7	300.1	302.68	304.21	304.63	307.93
<b>March</b>	186.2	213.2	231.5	238.0	249.5	260.2	270.6	284.7	298.7	297.8	299.3	295.3	300.5	302.96	304.04	305.63	308.31
<b>April</b>	186.4	215.8	231.6	242.2*	251.4	262.4	275.9	286.8	300.2	297.4	300.5	296	301.3	302.96	304.52	306.01	309.38
<b>May</b>	187.0	215.8	231.6	242.2*	252.7	262.7	276.6	287.4	301.3	296.9	302.7	297	301.8	302.85	304.86	306.97	309.87
<b>June</b>	187.1	215.8	231.7	242.2*	253.0	262.8	276.9	288.0	302.0	296.4	302.4	296.8	301.7	303.21	304.94	307.46	309.95
<b>July</b>	187.4	220.0	237.6	242.5	255.0	263.6	277.3	291.3	303.1	296.4	303.9	299.3	302.1	303.92	305.16	307.63	310.95
<b>Aug</b>	187.5	227.1	237.7	242.5	255.6	264.0	277.3	292.1	303.7	296.4	304.3	298.8	301.8	303.92	305.93	307.59	310.64
<b>Sept</b>	188.2	227.2	237.7	242.5	255.9	264.6	278.5	292.3	303.7	296.5	304.3	298.8	301.2	304.06	305.55	307.36	310.64
<b>Oct</b>	210.4	232.2	237.7	242.5	258.6	268.7	282.5	292.4	303.7	297.1	303.3	299.2	301.5	304.3	306.05	307.45	
<b>Nov</b>	210.4	232.2	237.7	242.5	259.2	268.6	282.9	292.8	303.5	297.2	303.2	299.5	301.7	304.27	305.71	307.94	
<b>Dec</b>	210.5	232.1	237.8	242.5	259.8	268.7	283.3	293.3	302.0	297.2	303.5	299.5	302.3	303.61	305.19	308.21	

Revised - April to July 2006 indices have been revised to allow for backdating arising from agreement of the social partnership "Towards 2016".

Provisional - These figures are reviewed bi-annually to check labour and material cost increases and any back-dated increases which may be applicable

Notes: January 2004 to September 2005 – these figures have been revised from those previously published

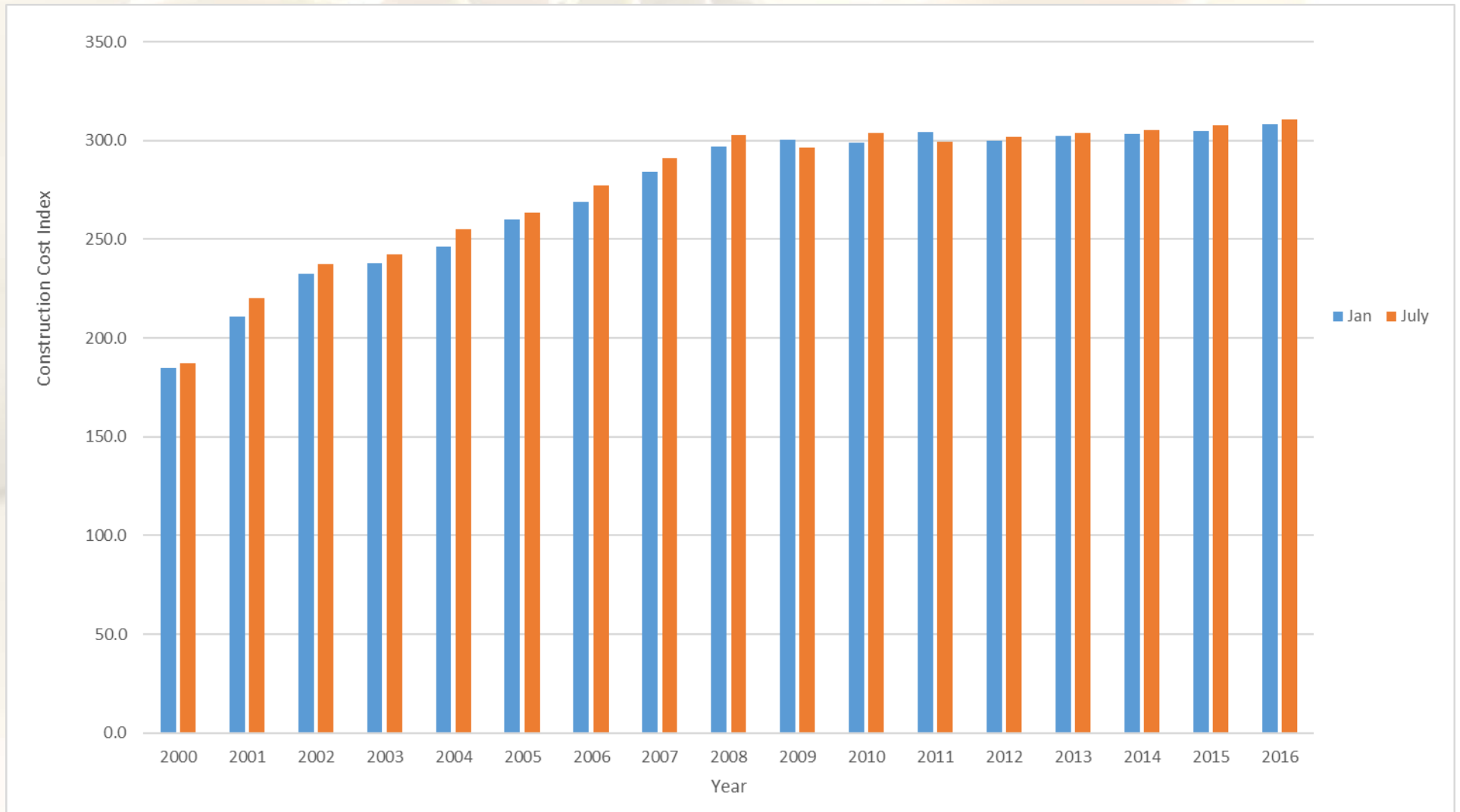
\*April /May/June 2003 figures revised to include backdated increase of 3% from 1st April 2003 under The Sustaining Progress National Agreement.

It is emphasised that the index is based on costs and therefore does not necessarily reflect Tender Prices. The Indices should not be used for projecting Tender Prices without taking into account all relevant factors. The Index numbers exclude VAT. The Index is issued for the Guidance of Quantity Surveying members of the Society.

Base Year: 1985

Source: The Society of Chartered Surveyors Ireland

# CONSTRUCTION COST INDEX 2000 - 2016



Source: The Society of Chartered Surveyors Ireland